



The Farm

IN GALONG

The Farm in Galong Ltd

ABN: 81 630 945 649

DGR 1 (Deductible Gift Recipient) Status

16 Ryan Street

Galong NSW 2585

office@galongfarm.org.au

Board

Ron Natoli (Chair)

Kate Cleary

Jane Brooks

Nyree Ashton

Oliver Morris

Auditors

Tax Management Consultants Pty Ltd

Suite 6, 207 Great North Road

Five Dock NSW 2046

Contents



CEO REPORT	4
THE YEAR IN REVIEW	6
Mid-Cycle Accreditation.....	6
International Women’s Day: Cracking the Code	7
Open day.....	7
A year of self-expression through art and creative writing.....	9
TESTIMONIES	13
THANK YOU TO OUR DONORS	16
FUNDRAISING	17
STAFFING	19
FROM THE CHAIR	20
HOW YOU CAN HELP	21
FINANCIAL STATEMENTS	22
Profit and Loss Report.....	22
Balance Sheet.....	24
Notes to the Financial Statements.....	26
Asset Summary for Accounts.....	28
Directors Declaration	30
Report on the Audit of the Financial Report	31

CEO Report

Welcome to the annual report for 2023. It has been a busy year marked by improvements to the program as we steadily bed things down here at the Farm. There has been an increased focus on training of both staff and clients in the Therapeutic Community method, ensuring that all members of the community understand the rationale for what we do. This is especially important for the clients themselves who are learning to become their own and their peers' healers.

We are also pleased to report further development of stakeholder relationships as our successful graduates re-enter society sharing the good news of their progress at the Farm. Congratulations to all our graduates this year for the achievement of the restoration of children and the securing of good employment. It was great to gather for the family day in November where the proud alumni were presenting their testimonies – with children in tow! Among those stakeholders who we affirmed on the day were the parents and extended families of the clients whose struggles and achievements often go unnoticed. It was a day to celebrate their perseverance and join with them in those simple enjoyments that others take for granted but have for a long time eluded them: to see them watch with pride their daughters' presentations; to hold their grandchildren and show them off to one another; and to share their struggles with people who can empathize with them.

This year has also seen a development in the academic aspects of the program. The Farm has started a library and clients now run a weekly book club. The study of Fine Arts has been added to the program and clients present artists and their works at morning meetings as well as imitating their styles in painting sessions. Clients are also finding therapeutic value in poetry – both reading the work of great poets as well as writing their own. Our psychologist comments that the cerebral work they are doing at the Farm is healing their frontal lobes!

My grateful thanks to all who have given their time, funds, and efforts to assist in this work.

Kate Cleary

CEO, The Farm in Galong Ltd.





The Year In Review

MID-CYCLE ACCREDITATION

The Farm achieved 80% at its mid-cycle accreditation in May with the following summary:

The Farm is to be commended for continuing to focus on program development, identifying areas for action to maintain sustainability (including staffing and appropriate Board members, diversification of funding and program development) and having developed a large network of supporters.

The commendation is in response to several program improvements. There has been an increase in client satisfaction as the program that is in place is further embedded. Examples of this include participants of the program having their children returned to them after committing to a schedule, maintaining sobriety and mental health gains. The Farm is also focusing on sourcing more volunteers and making sure they are supported appropriately. This has also included stakeholder engagement with clinicians in relevant geographic areas for when people are in the program and have exited to be able to access relevant services. Several clients maintain the clinicians they use at the Farm and are also re-locating closer to the Farm away from their prior locations to avoid contact with people who could put them at risk. This makes it easier for them to visit here and maintain contact for support and aftercare. Some previous clients have also developed a Farm "alumni" group who are supporting one another informally via phone and Facebook.

Intake processes have tightened to ensure the treatment setting is suited to the applicant. They now include a risk assessment from referrers; a face-to-face interview with applicants and regular contact with referral sources to make them aware of the program demands. Matching the client to the treatment setting enables an undistracted engagement with the program.

The Farm's reputation continues to grow within stakeholder groups especially within the legal sector as corrections clients successfully complete the program and secure employment. There have been improvements in staff quality with the addition of a psychiatric nurse as lead case manager; a fulltime office manager with extensive experience; and a case manager with a background in criminal law. The recent addition of Director Oliver Morris to the Board improves strengths in the areas of legal compliance. A special mention should also be made of the training staff are now required to do in the Therapeutic Community Method resulting in a clear frame of reference for program activities and decisions. We are currently in the process of becoming accredited with the Australasian Therapeutic Community Association to further consolidate the program. The accreditation process itself is an opportunity to review our practice.

All of this is made possible by the unified efforts of the Board, staff, volunteers, benefactors and the clients themselves.



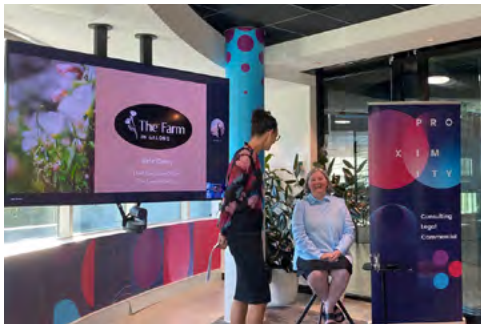
INTERNATIONAL WOMEN'S DAY: CRACKING THE CODE

Women who seek treatment for AOD issues usually come from backgrounds of interpersonal violence. The often-unseen victims in this are the children who witness this violence in their homes. Addressing interpersonal trauma has become a major treatment focus of the program. The Farm is therefore regularly asked to speak on this topic on International Women's Day and this year was invited to speak to two businesses on the theme: Cracking the Code. This was an opportunity to share our knowledge at close quarters of this grave social problem and to describe the Farm's response to the needs of those who experience it.

OPEN DAY

We welcomed our benefactors and ex-clients to the Farm on 18th November for our open day. It was a great opportunity to showcase the work and progress of our clients and to welcome back some of our alumni and their children. Clients in different stages of the program shared their experiences with the guests as well as baking and serving the refreshments.

The ABC was here for the afternoon and have done a story on the Farm, interviewing past and present clients. It was done as a follow up to the beautiful piece Craig Allen did in early 2020 just as we were opening up. The story will be aired on the news on Monday 26th February.



Proximity Conference – Women's Day Breakfast.





A YEAR OF SELF-EXPRESSION THROUGH ART AND CREATIVE WRITING.

Among the program developments in 2024 has been an increase in clients' study of art, poetry, and literature. The interest in art was inspired by a visit from our artist in residence in September:

Art immersion program: September

In September we welcomed Beth Cleary who did a four-day art immersion workshop with the clients. Artists studied were Vincent Van Gogh; Frida Kahlo; and Vernon Ah Kee. Clients were taught about the artists and how their work reflected and gave expression to their inner experiences. They were encouraged to imitate the artists as a means of their own self-expression resulting in some very moving work. The program inspired clients to continue to use drawing and painting as a means of working through some of their presenting issues.



Thanks to artist Beth Cleary for her inspiration.

Vernon Ah Kee – by M. S.

Vernon Ah Kee was born in Innisfail, Queensland in January 1967. His parents, Merv and Margaret Ah Kee were indigenous rights activists. Ah Kee is a member of the Kuku Yalandji, Waanji, Yidinji and Gugu Yimithirr peoples. When he was born he had no status nor considered a person because of the colour of his skin.

Ah Kee also has some Chinese ancestry from his great Grand-Father but he identifies more with his indigenous heritage. Vernon identifies himself as a rainforest aboriginal, a buma.

At the age of 12 the Ah Kee family moved from Innisfail to Cairns where Vernon attended St Augustine's College. After finishing high school Ah Kee attended Cairns TAFE where he learned Screen Printing. Vernon then went on to do a Bachelor of Visual Arts at Queensland College of Art where he majored in Contemporary Indigenous Australian Art and earned his degree in 1998. In 1999 he did honours in fine art and followed that with a doctorate in fine art from 2001-2007.

In 2014 Vernon's father, Merv was tragically killed in a car accident, this led him to draw a portrait which is titled "Portrait of my father" in 2017. Ah Kee described this piece as a labour of love.

In 2016 Ah Kee suffered a heart attack but managed to recover in time for his 2017 exhibition "Not an animal or a Plant".

Ah Kee is also one of the founders of ProppaNOW which was formalised in 2004. ProppaNOW is a Brisbane base collective for indigenous Australian artists in Queensland. It aims to counter stereotypes and give a voice to urban artists. The collective has mounted several exhibitions around the country.

Vernon Ah Kee now lives in Brisbane with his wife and children. As of December 2019 he has had 30 solo exhibitions and has been apart of 100 group exhibitions around the world. He has won numerous awards throughout his career including finalist in the Archibald Prize for his portrait I see deadly people: Lex Wotton. He also won the Redlands Konika Minolta established artist prize for his charcoal rendition of Lex Wotton. Vernon was also awarded a Visual Arts Fellowship by the Australian Council for the Arts which is awarded to prominent artist's mid-career.

Vernon uses a broad range of art mediums including charcoal drawing and painting on canvas, photography, word art as well as installation on surfboards and video. Throughout off of his work there is a consistent theme of racism in Australia.

Ah Kee has commented that Australia is no shining star in the human rights arena and this message is clearly displayed thought all of his pieces. Vernon fuses the history and language of colonisation with contemporary black and white to expose the political issues of underlying racism in Australia today.

Ah Kee's portraits are the faces of Aboriginal people who were considered to be not fully human. They are faces of people who didn't count. Vernon wanted to humanise them and to show their persistence, endurance, courage, determination and survival through their portraits.

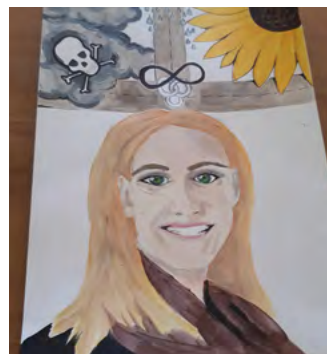
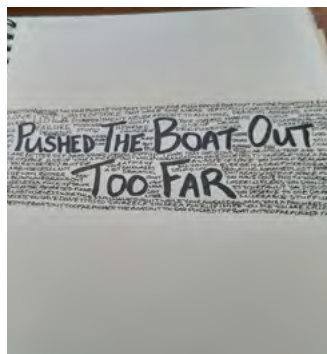
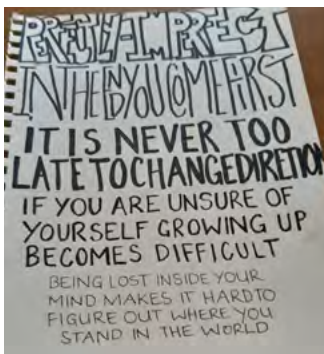
Ah Kee's piece titled "austracism" is word art that was created in 2003. It is a direct play on the word ostracism, the exclusion from a society or group. In large print at the forefront of the image is the word austracism. Vernon has printed "aust" in black and "racism" in grey. The background of the image is made up of statements that



all start with “I am not racist but...” this is then followed by the hurtful, racist words that have become common language among many white folk. Statements such as “I am not racist but...my father worked hard to buy this land, I’m not racist but... What about us white people? and I’m not racist but...alcohol consumption in Aboriginal communities is reaching distressing levels.

Every statement that in the artwork is racist, hurtful and demoralising to aboriginal people yet they are statements that have become acceptable language among many white Australians. The opening line of “I am not racist but” is used far too freely and I think that Ah Kee uses the statements to mirror this unacceptable language back to white Australians in a way that provides that much needed reality check on the seriousness of the issue.

I like the clever use of words in the “austracism” print. I find the statements in the background to be very confronting and I like how they force the viewer to consider the impact that their own language may have had on people. I know that I myself am guilty of using the words “I am not racist but” so I liked that the print gave me a slap in the face as to how demeaning I have been in the past in regard to the subject matter.



Artworks created during the Art Immersion Program.

The power of the written word

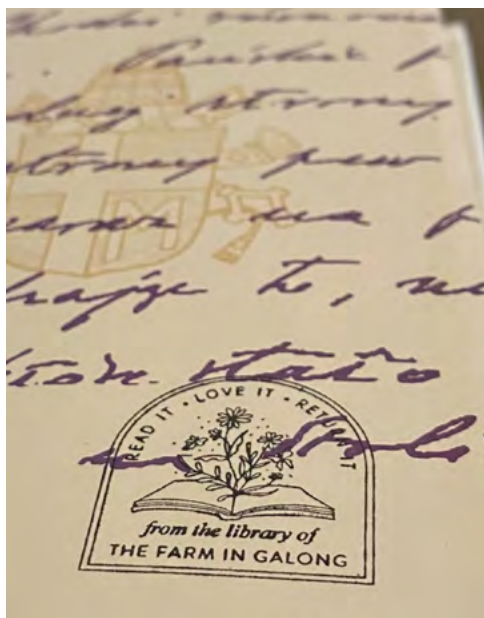
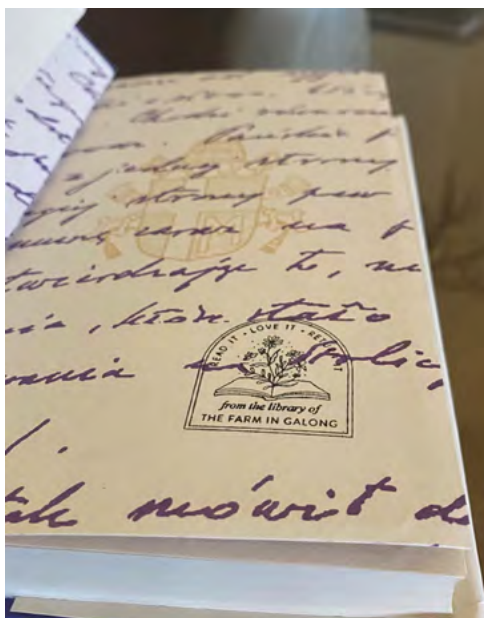
The clients have also started a library which includes some age-old classics and now hold a regular book club meeting. The current book being studied is *Pride and Prejudice*.

Poetry is a new form of therapy clients have discovered:

“My eyes are teary
 My eyes are open
 My eyes see clearly
 My eyes have spoken

My heart needs mending
 My heart is in pain
 My heart loves big
 My heart is to blame

My mind needs work
 For my mind is young
 But my mind is willing
 For what’s yet to come.”



Book cover stamp from the library of The Farm.

Testimonies



We present testimonies from a range of stakeholders for your information and enjoyment.

From a satisfied lawyer:

As you know, substance abuse and its attendant problems are hard to overcome, and relapse is common. Stakeholders in the legal sector see clients come back and forward to court as they try unsuccessfully to break the cycle. One graduate last year surprised the court that she had been attending regularly over many years by coming in this time smartly dressed and completely transformed in appearance and on paper as well! We were happy to receive the news of her success at court and received grateful calls and letters from her family members and her lawyer.

Here is an excerpt from an email received by the CEO from her lawyer:

“I take this opportunity of thanking you and the staff for your wonderful efforts in assisting xxxxxx leading to the very positive outcome at her sentencing on Friday.....the work you do in Galong is so important for our community. The scourge of drug addiction is a manifest one in our community. xxxxx was addicted to substances for many years and this no doubt reflected the sad upbringing. She has been supported by her family and other personssuch as your good self and the staff at Galong. It is wonderful that she obtained employment with a leading law firm in xxxx which simply illustrates her determination to affect her rehabilitation.”

From a relieved grandmother:

“I am very happy with xxxx. She has done everything DCJ has asked, and I feel she will be complete in January when the boys return home to her. I will also get to know my grandchildren. I am still extremely grateful to you for what you have done for my family.”

From clients – experiences of healing:

“The farm is a safe place. It is isolated away from all chaos. It has a feel of home and amazing staff. The farm supported me with my children and also helped me keep custody of my son. we came from the hospital to straight there. My journey at the farm was something that has left a mark on me for the rest of my life. At times it challenged me, but it helped heal me in ways that I never thought where possible. For that I am grateful for the farm and the experience I have had compared to other rehabs I have been to this one really made a difference. The skills and knowledge I learnt at the Farm really helped change my life. Here I addressed behaviours that I had been struggling with most of my life. It helped me with emotional regulation, to heal my trauma and poor impulse control. It taught me one day at a time and also to cope with things as they come and to sit still more patiently. Now I am doing well, and I have a positive future ahead!”

“Never in my life did I imagine that I would be sitting down writing a testimonial to The Farm in Galong! but I am, and I owe my life to his small, but wonderful establishment, and to the CEO and staff who have committed themselves to it.

I cannot praise it highly enough; this Therapeutic Community is helping turn people’s lives around.

My purpose in going to the Farm was to make lifestyle changes to decrease the need for alcohol in my life. The Farm has an excellent program to cover the many areas that re-educate the person’s thoughts and opinions, and the subjects are focused on complete recovery. However, in my opinion, the changes to your life must be earned, by taking on all that the Farm offers. Its schedule of duties is the most influential area of change in attitude and habits, each person has their own responsibility towards this schedule succeeding, it covers all areas of building self-esteem, self-knowledge, re-educating and

discipline. If you choose not to participate in all that it offers, then you may not cope well. You must throw yourself into this program with a steely resolve to make it work for you and change your life forever.

It worked for me, and I will never be able to thank the Farm enough. I hope that my reflection will be a positive for someone out there.”

“While I have been at the Farm for only a few months, the experience has saved my life. Upon arrival I was broken, lost, and defeated by life. I had nothing left in me. With the support of the clients and staff I am regaining my self-worth and self-esteem. My confidence is coming back. As I work through the program, I am developing the healthy coping mechanisms and the interpersonal skills that will be vital for me to maintain the change that I so desperately wanted and needed to make. I have regained a sense of direction and the feeling that life is worth living. The Farm has given me a second chance at life.”

Correspondence - by text and email - from former clients whose children were restored. These texts and messages are wonderful to receive and really brighten the staff's day:

“XXXX has four teeth with more about to come through and is practicing walking with holding onto the furniture. He is doing well. It's been nice at home with him. We have a routine, and he has two naps in the day and basically sleeps all night from 8pm to 6.30am. We go for walks almost every day and he is eating his meals.

I still haven't got to see my other kids which has been very difficult but thanks to you and the Farm I've managed to implement all the tools you have given me. I am persevering and dealing with it all without letting it become something, “in one door and put the other” “like a cloud of emotion just floating over” I feel a great deal of maturity and happiness as even though my process of getting my other kids is now delayed more, it's ok. I just keep

thinking about everything and as well my gratitude to you and the farm! I'm not resulting back to my old ways I have XXXX still and I'm doing my best one day at a time! Well, enough said I'll leave it all at that. I hope all is well at the farm! Love you like a mum!”

“Hi Kate, I'm not sure if I'll be able to make it as I am getting my kids back I just need a house so I'm working very very hard on getting one. XXXX will be with XXXX and I within a month and then once I have a house XXXX and XXXX will be coming back too.

I will let you know how I go and if I can make it or not closer to the day.”

“Hi Kate, I will have to let you know as I'm not sure if xxxx and xxxx will be down with me for that weekend. I won my court case and I'm getting restoration. Boys will be back with me 5 days a week as of January.”

“My court was about to finalise for the children in July. 18-year orders were supposed to be finalised. My lawyer made a comment about trying to have the findings overturned.

I tossed and turned about it all because I've been through so much in court these last two years, So, we requested the application, and I was assessed by the court clinician again.

Finally on the 5th of September I got the results back. It was recommended to the court that the children be restored to their mother! And with that all parties supporting restoration it's finally happening, the whole process has been a long and exhausting one, I've given myself a whole new life. My case is a very rare case, but I couldn't have done it without my journey at “The Farm” and all the programs I have done, the knowledge and insight I have learnt, all of the ups and downs it hasn't been easy! I finally understand that although I lost my children it was a blessing in disguise it has really been as now, I am a better person, a better parent and I have gained so much that I can now implement with my children so they don't have to go through the things I lived through.”



Thank You To Our Donors

We have many people to thank again for their generous support, without which we could not provide the services to our clients – Thank you!

A special mention to the Nielson Foundation; Proximity; The Leung Memorial Trust, Ms Caroline McBride; Contentgroup; Snow Foundation; Hands Across Canberra; Kenyon Foundation; The Valde Chiesa Foundation, Mercury Private; APS Foundation; AFA Foundation; Future Generation Investment & Social Returns; The Friends of the Farm; Catholic Church Insurance; St Clare's Catholic College, Canberra; Sisters of Mercy; Catholic Women's League; St Mary's Parish, Young; The Department of Regional NSW; Mr Stephen Meyerson; Clayton Utz; Mrs Anne Kelly; Knights of the Southern Cross, Canberra; Geoff & Una Wood; Stephen & Polly Mackay; Ms Jeanette Smith; Mrs Lina Shlager; Order of St Lazarus; Ms Judith Blundell; Holy Trinity Catholic Parish, Curtin; Ms Giulia Jones; Mrs Helen O'Keefe; Mrs Kym Duggan; Ms Kathy Kinsella; C Ryde; Ms Deborah Moyle; Mr Paul Cohen; Mr Shane McGrath; Ms Bernadette Meffert; Fr Tom Thornton; Ms Susan Evens; and many more who donated anonymously. Donations funded a range of programs and services including:

- Trauma counselling
- Therapeutic Group work
- Psycho-education classes
- Philosophy classes
- Financial Counselling
- Exercise classes
- Supporting clients with protection order applications
- Supporting and encouraging clients to make statements to police where required.
- Updating Medicare and Centrelink, ensuring relevant benefits are paid.
- Dental care
- Medical care
- Debt reduction sessions
- Work Development Order applications
- Ensuring Mental Health Treatment Plans are put in place to access Medicare subsidised counselling.
- Parenting therapy
- Psychology sessions
- Life skills coaching
- Tutoring in literacy, numeracy, and IT skills
- Facilitation of TAFE course completion
- Access to work experience and employment
- Assistance and advocacy for housing -facilitating applications for private rental subsidy or access to other social housing options; assisting in searching for appropriate ongoing housing.
- Treatment planning sessions
- Enrolling children in school and childcare
- Ensuring children's immunisation histories are up to date.
- Trauma informed play and activities for children
- Emotional regulation exercises for children
- Family support through counselling and information sessions
- Provision of supervised zoom sessions with children in out of home care
- After care through warm referrals to agencies in the areas that clients relocate to and follow up phone calls and invitations to visit.

Fundraising

Thanks to the teams of people who assisted with fundraising this year: to Aspen Medical, Hawari Badri and Kim McKinnon for funds raised through the High Tea. The Catholic Women's League Sydney for another High Tea fundraiser. The parishioners of Holy Trinity Church for the parish dinner fundraiser and to Don Jeffrey and team for the Bunnings Barbeque organization and supervision.



High Tea fundraiser.





Staffing

Goodbye and thank you to Dr Jonathan Ho and welcome Dr Marie Rose Mouawad.

This year we sadly farewell Dr Jonathan Ho who is transferring to Queensland where he will take up a position as a forensics specialist in a hospital. Dr Ho has been the Farm's Visiting Medical Officer since we first began here in 2019. He has been a healer in many ways for our clients, offering sound, skilled medical advice along with an empathy and care that is unmatched. We wish him all the best in his new work.

We welcome Dr Marie Rose Mouawad to the team.

My name is Dr Marie-Rose (aka Mary), I've been a doctor for 10 years with some overseas experience. I heard about the Farm by "accident" or as I say by Providence. I'm working in drug and alcohol for an extended skills term through my GP training. I was privileged to have visited the Farm towards the end of 2023 and absolutely loved my stay there. It is much more different being on the "other side" - so this trip was definitely an eye opener. I've always wanted to work with the poor, the marginalised and the less fortunate. I truly felt like I belonged when I was at the Farm, and I do hope I can contribute a bit to the great work that has already been done. It is a great privilege to join the team!

We also welcome Anne Reeves and Brooke Beer to the case management team, as well as Amanda Kalauta as fulltime office worker. Annette Stevens our house care supervisor is on sabbatical and ably replaced by Amy Collins.



Farewell to our VMO and thank you!



Welcome Dr Marie Rose Mouawad!



From The Chair

Welcome to our Annual Report for the 2022/2023 year. This year has been a year of growth, particularly in the area of program development and consolidation. I would like to thank the staff at the Farm for their dedication to ensuring the clients are receiving the solid care they require for permanent recovery. I would also like to thank Kate Cleary for continuing to build capacity through the hiring of highly qualified and committed staff. We are also grateful for the clinical staff who do so much for our clients: to our parenting therapist, Dr Simone Collier; to our psychologist, Mrs Mary Ticinovic and to the indefatigable Dr Jonathan Ho who we sadly farewell this year. We are really blessed with the level of commitment and engagement among staff at the Farm.

Thanks also of course to our Board of Directors whose governance and oversight is deeply appreciated. We welcomed Director Oliver Morris to the Board last year as our new secretary.

The Farm could not continue to deliver its services without the help of an extensive and growing group of supporters. This support includes long term pro-bono support from Clayton Utz and Proximity; in-kind support over many years from Vinnies; and regular donations from a large number of donors. Thanks to these groups and individuals in particular:

The Australian Philanthropic Foundation; The Order of St Lazarus; The Catholic Women's League; Hands Across Canberra; the Snow Foundation; Aspen Medical; the Kenyon Foundation; the Neilson Foundation; Catholic Church Insurances; the C F Leung Memorial Trust; Future 2 Foundation; Mr Shane McGrath; Mrs A.T. Kelly; Mr Kym Duggan; Ms Helen O'Keefe; C.F. McBride; Mrs Lina Shlager; Fr Thomas Thornton; and Ms Judith Blundell.

The large and dedicated network of supporters that has grown up around the Farm gives evidence that the work we do is considered of great value to the community. Many of them attended our family day at the Farm in November and were able to see first-hand the effect that their contributions are having on a daily basis when past and present clients gave presentations on their recovery experiences at the Farm. It was particularly gratifying to see the past clients there with their children who had been returned to them and were thriving.

Once again, on behalf of the Board of the Farm in Galong, I thank you all.

Ron Natoli

Chair, The Farm in Galong Ltd.



How You Can Help

We are always grateful for help to continue to build the Farm's outreach and effectiveness. Donations to us make a real difference to the lives of women and children in need. No matter what size the donation, every dollar helps.

Below are the bank details for donations. All donations over \$2 are tax deductible.

Account Name: The Farm in Galong Ltd

BSB: 633 000

Account number: 165 751 173



Financial Statements

The Farm in Galong Limited

For the year ended 30 June 2023

PROFIT AND LOSS REPORT

	2023	APR 2022 - MAR 2023
INCOME		
Trading Profit		
Revenue	549,445	579,337
Total Trading Profit	549,445	579,337
Total Income	549,445	579,337
OTHER INCOME		
Insurance Recoveries	-	5,468
Interest Received	472	50
Investment Income	17,594	-
Other Income	60	-
Total Other Income	18,126	5,518
Total Income	567,571	584,855



	2023	APR 2022 - MAR 2023
EXPENSES		
Accountancy	773	500
Advertising & Promotion	4	2,319
Bank Fees & Charges	368	333
Computer Expenses	8,808	7,427
Cookbook Design & Website	-	12,970
Depreciation - Plant	3,393	3,945
Electricity	17,677	10,823
Food & Household Items	25,411	13,687
Grants Expended	-	12,001
Insurance	12,076	10,754
Investment Expenses	2,112	-
Low Cost Assets	1,986	32,097
M/V Car- Fuel & Oil	8,249	5,757
Medical Expenses	564	404
Printing & Stationery	4,072	631
Repairs & Maintenance	28,309	54,293
Subcontractors	10,113	9,965
Subscriptions	6,798	5,749
Superannuation	24,632	19,652
Teaching Materials	631	302
Telephone	4,966	6,972
Travel, Accom & Conference	-	30
Wages	257,016	213,887
Total Expenses	417,956	417,956
Profit/(Loss) before Taxation	149,614	160,359
Net Profit After Tax	149,614	160,359
Net Profit After Distributions/Dividends Paid	149,614	160,359

BALANCE SHEET

	Notes	30 Jun 2023	30 Jun 2022
ASSETS			
Current assets			
Bank Accounts			
Bendigo Bank- Card Account		3,425	4,313
Bendigo Bank- Client Trust Ac		7,635	1,821
Bendigo Bank- Endowment A/c		100,653	150,224
Bendigo Bank- Main Account		129,592	188,068
Total Bank Accounts		241,305	344,426
Gst Payable Control Account		1,119	1,477
Trade Debtors		2,510	-
Total Current Assets		244,934	345,903
Non-Current Assets			
Property, Plant and Equipment		10,843	14,236
Shaw & Partners Investment		262,972	-
Total Non-Current Assets		273,815	14,236
Total Assets		518,749	360,139
LIABILITIES			
Current Liabilities			
Amounts Withheld from Salary & Wages		8,306	9,388
Superannuation Payable		5,496	5,161
Trade Creditors		1,692	30
Trust Account Balances		9,751	1,670
Total Current Liabilities		25,245	16,250
Total Liabilities		25,245	16,250
Net Assets		493,504	343,890



	Notes	30 Jun 2023	30 Jun 2022
EQUITY			
Retained Earnings		493,504	343,890
Total Equity		493,504	343,890

The accompanying notes form part of these financial statements.
These statements should be read in conjunction with the attached compilation report.



NOTES TO THE FINANCIAL STATEMENTS

Statement of Significant Accounting Policies

The directors have determined that the company is not a reporting entity and accordingly, this financial report is a special purpose report prepared for the sole purpose of distributing a financial report to members and must not be used for any other purpose. The directors have determined that the accounting policies adopted are appropriate to meet the needs of the members.

The financial report has been prepared on an accrual basis and under the historical cost convention, except for certain assets, which, as noted, have been written down to fair value as a result of impairment. Unless otherwise stated, the accounting policies adopted are consistent with those of the prior year.

The accounting policies that have been adopted in the preparation of the statements are as follows:

Property, Plant and Equipment

Property, plant and equipment is initially recorded at the cost of acquisition or fair value less, if applicable, any accumulated depreciation and impairment losses. Plant and equipment that has been contributed at no cost, or for nominal cost, is valued and recognised at the fair value of the asset at the date it is acquired. The plant and equipment is reviewed annually by directors to ensure that the carrying amount is not in excess of the recoverable amount from these assets. The recoverable amount is assessed on the basis of the expected net cash flows that will be received from the utilisation of the assets and the subsequent disposal. The expected net cash flows have been discounted to their present values in estimating recoverable amounts.



Trade and Other Receivables

Trade receivables and other receivables, including distributions receivable, are recognised at the nominal transaction value without taking into account the time value of money. If required a provision for doubtful debt has been created.

Financial Assets

Investments held are originally recognised at cost, which includes transaction costs. They are subsequently measured at fair value which is equivalent to their market bid price at the end of the reporting period. Movements in fair value are recognised as income.

Trade and Other Payables

Trade and other payables represent the liabilities for goods and services received by the company that remain unpaid at 30 June 2023. Trade payables are recognised at their transaction price. They are subject to normal credit terms and do not bear interest.

Cash and Cash Equivalents

Cash and cash equivalents include cash on hand, deposits held on call with banks, other short-term highly liquid investments with original maturities of three months or less, and bank overdrafts.

Goods and Services Tax

Transactions are recognised net of GST, except where the amount of GST incurred is not recoverable from the Australian Taxation Office (ATO).

Receivables and payables are stated inclusive of the amount of GST receivable or payable. The net amount of GST recoverable from, or payable to, the ATO is included with other receivables or payables in the balance sheet.

Grants

Grant income is recognised in the income statement when the entity receives the grant, when it is probable that the entity will receive the economic benefits of the grant and the amount can be reliably measured.

If the grant has conditions attached which must be satisfied before the entity is eligible to receive the grant, the recognition of the income will be deferred until those conditions are satisfied.

Donations and bequests are recognised as income when received.



ASSET SUMMARY FOR ACCOUNTS

1 Jul 2022 to 30 Jun 2023

Generated by AssetAccountant™

12/11/2023

Name	Status	Opening (1 Jul 2022)		Current Period		Disposal		Closing (30 Jun 2023)		
		Cost	WDV	Acquisitions/ Transfers	Depreciation	Proceeds	Profit/ Loss	Cost	Accum Depn	WDV
MOTOR VEHICLES										
MV0001 Motor Vehicle- Ford Territory SZ Titanium Wagon	Active	\$14,545	\$10,909	-	(\$2,727)	-	-	\$14,545	(\$6,363)	\$8,181
Motor Vehicles Total		\$14,545	\$10,909	-	(\$2,727)	-	-	\$14,545	(\$6,363)	\$8,181
PLANT & EQUIPMENT										
PE0001 Ride-on Mower	Active	\$3,636	\$3,327	-	(\$665)	-	-	\$3,636	(\$974)	\$2,662
Plant & Equipment Total		\$3,636	\$3,327	-	(\$665)	-	-	\$3,636	(\$974)	\$2,662
Grand Total		\$18,181	\$14,236	-	(\$3,393)	-	-	\$18,181	(\$7,338)	\$10,843





DIRECTORS DECLARATION

The directors of the company declare that:

1. The financial statements and notes, present fairly the company's financial position as at 30 June 2023 and its performance for the year ended on that date in accordance with the accounting policies described in Note 1 to the financial statements; and
2. In the directors' opinion there are reasonable grounds to believe that the company will be able to pay its debts as and when they become due and payable.

This declaration is made in accordance with a resolution of the Board of Directors.

Kathryn Cleary

Director, The Farm in Galong Ltd.

Nyree Ashton

Director, The Farm in Galong Ltd.



REPORT ON THE AUDIT OF THE FINANCIAL REPORT

Opinion

We have audited the financial report of THE FARM IN GALONG LIMITED (the Company), which comprises the Balance Sheet as at 30 June 2023 and the Profit & Loss Statement for the year then ended.

In our opinion, the accompanying financial report of THE FARM IN GALONG LIMITED is in accordance with the Corporations Act 2001, including:

- (a) giving a true and fair view of the company's financial position as at 30 June 2023 and of its performance for the year then ended; and
- (b) complying with Australian Accounting Standards and the Corporations Regulations 2001.

Basis for Opinion

We conducted our audit in accordance with Australian Auditing Standards. Our responsibilities under those standards are further described in the Auditor's Responsibilities for the Audit of the Financial Report section of our report. We are independent of the company in accordance with the auditor independence requirements of the Corporations Act 2001 and the ethical requirements of the Accounting Professional and Ethical Standards Board's APES 110 Code of Ethics for Professional Accountants (the Code) that are relevant to our audit of the financial report in Australia. We have also fulfilled our other ethical responsibilities in accordance with the Code.

We confirm that the independence declaration required by the Corporations Act 2001, which has been given to the directors of the company, would be in the same terms if given to the directors as at the time of this auditor's report.

We believe that the audit evidence we have obtained is sufficient and appropriate to provide a basis for our opinion.

Emphasis of Matter - Basis of Accounting

The financial report has been prepared for the purpose of fulfilling the directors' financial reporting responsibilities under the Corporations Act 2001. As a result, the financial report may not be suitable for another purpose. Our opinion is not modified in respect of this matter.

Information Other than the Financial Report and Auditor's Report Thereon

The directors are responsible for the other information. The other information comprises the information included in the Company's annual report for the year ended 30 June 2023, but does not include the financial report and our auditor's report thereon.

Our opinion on the financial report does not cover the other information and accordingly we do not express any form of assurance conclusion thereon.

In connection with our audit of the financial report, our responsibility is to read the other information and, in doing so, consider whether the other information is materially inconsistent with the financial report or our knowledge obtained in the audit or otherwise appears to be materially misstated.

If, based on the work we have performed, we conclude that there is a material misstatement of this other information, we are required to report that fact. We have nothing to report in this regard.

Responsibilities of the Directors for the Financial Report

The directors of the company are responsible for the preparation of the financial report that gives a true and fair view and have determined that the basis of preparation is appropriate to meet the requirements of the Corporations Act 2001 and is appropriate to meet the needs of the members. The directors' responsibility also includes such internal control as the directors determine is necessary to enable the preparation of a financial report that gives a true and fair view and is free from material misstatement, whether due to fraud or error.

In preparing the financial report, the directors are responsible for assessing the company's ability to continue as a going concern, disclosing, as applicable matters relating to going concern and using the going concern basis of accounting unless the directors either intend to liquidate the company or to cease operations, or have no realistic alternative but to do so.

Auditor's Responsibilities for the Audit of the Financial Report

Our objectives are to obtain reasonable assurance about whether the financial report as a whole is free from material misstatement, whether due to fraud or error, and to issue an auditor's report that includes our opinion. Reasonable assurance is a high level of assurance, but is not a guarantee that an audit conducted in accordance with the Australian Auditing Standards will always detect a material misstatement when it exists. Misstatements can arise from fraud or error and are considered material if, individually or in the aggregate, they could reasonably be expected to influence the economic decisions of users taken on the basis of this financial report.

As part of an audit in accordance with the Australian Auditing Standards, we exercise professional judgment and maintain professional scepticism throughout the audit. We also:

- Identify and assess the risks of material misstatement of the financial report, whether due to fraud or error, design and perform audit procedures responsive to those risks, and obtain audit evidence that is sufficient and appropriate to provide a basis for our opinion. The risk of not detecting a material misstatement resulting from fraud is higher than for one resulting from error, as fraud may involve collusion, forgery, intentional omissions, misrepresentations, or the override of internal control.
- Obtain an understanding of internal control relevant to the audit in order to design audit procedures that are appropriate in the circumstances, but not for the purpose of expressing an opinion on the effectiveness of the company's internal control.



- Evaluate the appropriateness of accounting policies used and the reasonableness of accounting estimates and related disclosures made by the directors.
- Conclude on the appropriateness of the directors' use of the going concern basis of accounting and, based on the audit evidence obtained, whether a material uncertainty exists related to events or conditions that may cast significant doubt on the company's ability to continue as a going concern. If we conclude that a material uncertainty exists, we are required to draw attention in our auditor's report to the related disclosures in the financial report or, if such disclosures are inadequate, to modify our opinion. Our conclusions are based on the audit evidence obtained up to the date of our auditor's report. However, future events or conditions may cause the company to cease to continue as a going concern.
- Evaluate the overall presentation, structure and content of the financial report, including the disclosures, and whether the financial report represents the underlying transactions and events in a manner that achieves fair presentation.

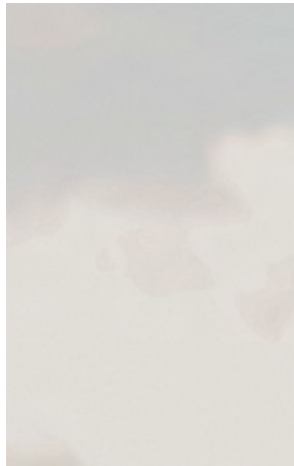
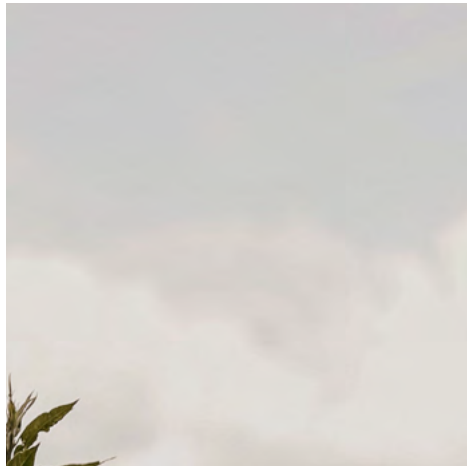
We communicate with the directors regarding, among other matters, the planned scope and timing of the audit and significant audit findings, including any significant deficiencies in internal control that we identify during our audit.

Signed on 14 November, 2023:

Max Raiola

Tax-Management Consultants Pty Ltd

Suite 6, 207 Great North Road,
Five Dock NSW 2046



ADDRESS

16 RYAN STREET, GALONG NSW 2585

ONLINE

WWW.THEFARMINGALONG.COM.AU

PHONE

(02) 6386 7275

